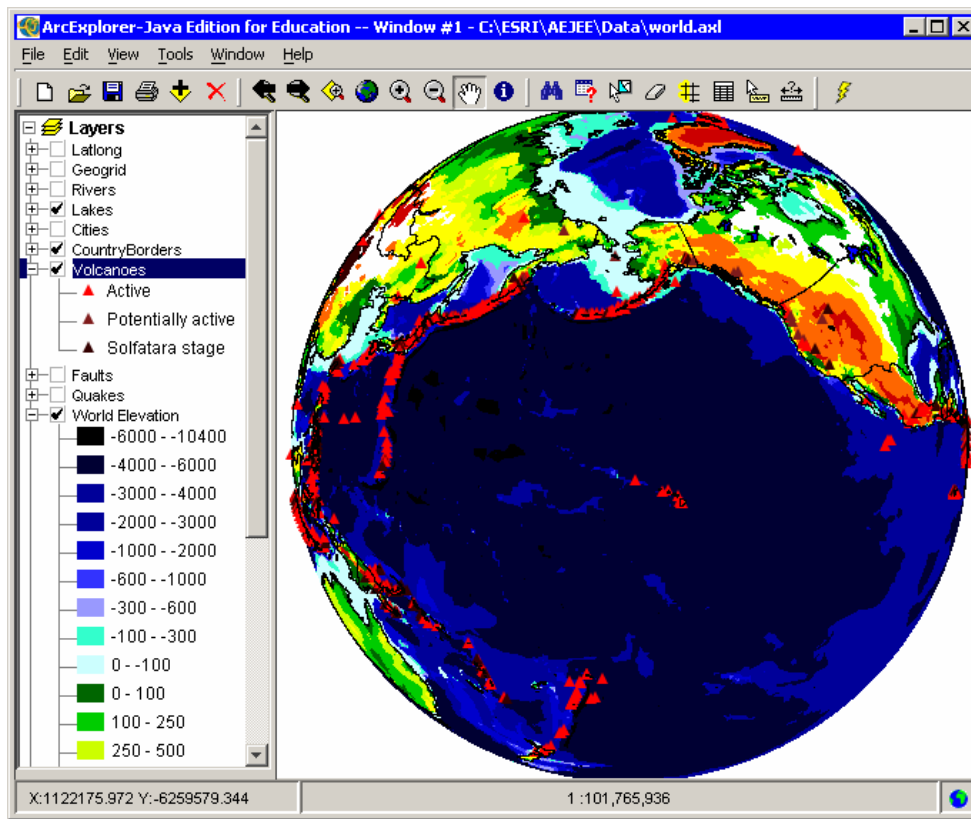
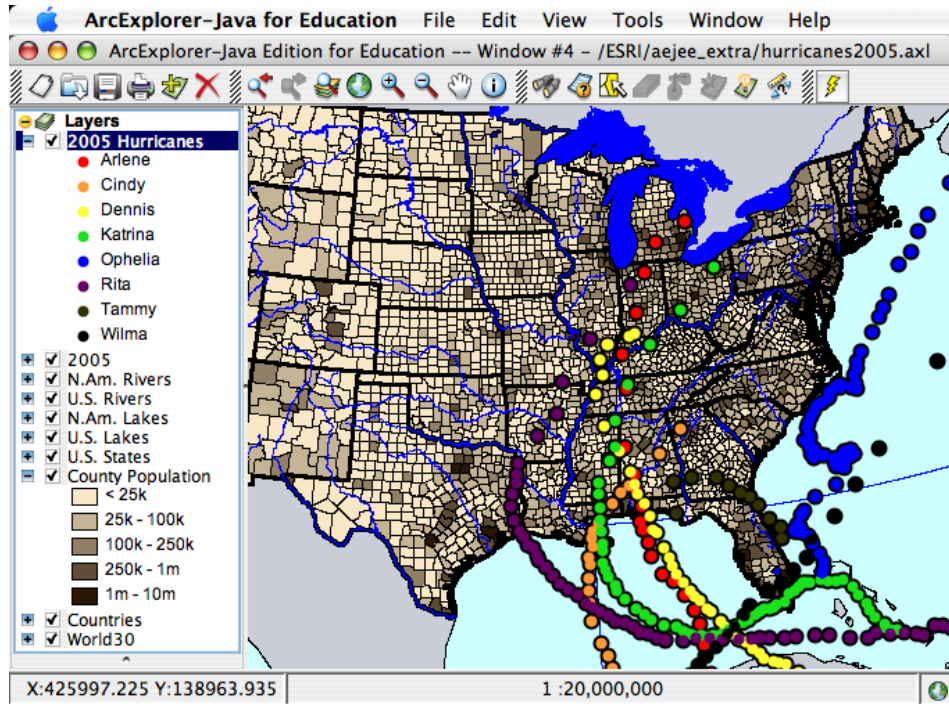


# ArcExplorer™ —Java™ Edition for Education

[www.esri.com/aejee](http://www.esri.com/aejee)



# Contents

<b>Title</b>	<b>Pages</b>	<b>Content</b>
Intro to AEJEE	1-8	<ul style="list-style-type: none"><li>• Contents</li><li>• Installation</li><li>• Software capacities</li><li>• Interface</li><li>• Projects included with the software</li><li>• Redistribution rights</li></ul>
Getting Started with AEJEE: Lesson 1	9-16	<ul style="list-style-type: none"><li>• Opening projects</li><li>• Layers</li><li>• Zoom and pan</li><li>• Identify</li><li>• Features and attributes</li><li>• Tables and sorting</li><li>• Selection and queries</li></ul>
Getting Started with AEJEE: Lesson 2	17-24	<ul style="list-style-type: none"><li>• Classification</li><li>• Symbolization</li><li>• Histograms</li><li>• Naming layers</li><li>• Labeling</li><li>• MapTips</li></ul>
Getting Started with AEJEE: Lesson 3	25-32	<ul style="list-style-type: none"><li>• Map projection</li><li>• Scale</li><li>• Measuring distance</li><li>• Overview map</li><li>• Exporting an image</li><li>• Layouts</li></ul>
Getting Started with AEJEE: Lesson 4	33-40	<ul style="list-style-type: none"><li>• Integrating image data</li><li>• Saving projects</li><li>• Adding data</li><li>• Event (XY) themes</li><li>• Hot links</li><li>• Buffer</li><li>• Catalog</li></ul>
Getting Started with AEJEE: Lesson 5	41-46	<ul style="list-style-type: none"><li>• Scale dependence</li><li>• Using data live from ArcIMS servers</li></ul>
Appendix 1	47-48	<ul style="list-style-type: none"><li>• Additional installed data &amp; projects</li></ul>
Appendix 2	49-52	<ul style="list-style-type: none"><li>• Transportable projects</li></ul>
Appendix 3	53-54	<ul style="list-style-type: none"><li>• Geo-registering images with ArcView 9</li></ul>
Appendix 4	55-56	<ul style="list-style-type: none"><li>• What next? Tools, Data, Support</li></ul>
Appendix 5	57	<ul style="list-style-type: none"><li>• What's new in this version of AEJEE?</li></ul>
Appendix 6	58	<ul style="list-style-type: none"><li>• For more info</li></ul>

# Installing ArcExplorer—Java Edition for Education

AEJEE is a stand-alone package of software that includes a Java Runtime Engine in the installation. AEJEE is a free tool designed for use particularly in education environments. It is meant to be installed and used on individual computers rather than from a server.

1. Check the system specifications
  - a. **Windows:** Win2000 or WinXP, 100 MB hard drive space, Internet connection; recommend Pentium III or faster processor and more than 64 MB RAM
  - b. **Macintosh:** MacOS 10.3 or above, 100 MB hard drive space, Internet connection; recommend G4 or faster processor and more than 64 MB RAM
  - c. On both platforms, AEJEE will install its own Java Runtime Engine.
  - d. See also [www.esri.com/software/mojava/about/sys-reqs.html](http://www.esri.com/software/mojava/about/sys-reqs.html) for fullest detail.
2. Before installing a new version of AEJEE, uninstall any previous version. Navigate to the software location (typically [hard drive]/ESRI/AEJEE), open the folder UNINSTALL\_AEJEE, and engage the uninstaller. The uninstaller will delete only the core files, not any user-installed files such as data or projects.
3. Download AEJEE from [www.esri.com/software/arcexplorer/download-education.html](http://www.esri.com/software/arcexplorer/download-education.html) Choose Windows or Macintosh. Use your file compression software to uncompress the downloaded installer, placing it in a folder where you can find it. **To install, you must be logged in to the computer with administrative privileges.**
4. **WINDOWS INSTALLATION:**
  - a. Using Windows Explorer, navigate to the uncompressed installation file, "install.exe".
  - b. Double-click the installer and follow the instructions. AEJEE defaults to install in C:\ESRI\AEJEE. The text in this tutorial will use the default directory.
5. **MACINTOSH INSTALLATION:**
  - a. Using Finder, navigate to the uncompressed installation file "Install".
  - b. Double-click the installer and follow the instructions. AEJEE defaults to install in [hard drive]/ESRI/AEJEE. The text in this tutorial will use the default directory.
6. Getting Started with AEJEE
  - a. Introduce yourself to AEJEE by walking thru the lessons in this packet. Look for more lessons at [www.esri.com/arclessons](http://www.esri.com/arclessons) (choose "By Software - ArcExplorer").
  - b. Learn more about GIS in schools and the geographic inquiry process from the documents "Exploring Common Ground" and "Geographic Inquiry", downloadable from [www.esri.com/industries/k-12/education/literature.html](http://www.esri.com/industries/k-12/education/literature.html)
  - c. An excellent brief introduction to principles of cartography can be downloaded from [www.esri.com/industries/k-12/download/docs/intrcart.pdf](http://www.esri.com/industries/k-12/download/docs/intrcart.pdf)
7. Introduce GIS to your students.
  - a. Show students what GIS is and how it is used in the real world using these sources:
    1. [www.gis.com](http://www.gis.com)
    2. [www.esri.com/mapmuseum](http://www.esri.com/mapmuseum)
    3. [www.esri.com/industries.html](http://www.esri.com/industries.html)
    4. [www.gisday.com](http://www.gisday.com)
    5. [www.geographynetwork.com](http://www.geographynetwork.com)
    6. [www.esri.com/communityatlas](http://www.esri.com/communityatlas)
  - b. Take students through "Getting Started with AEJEE" lessons (the rest of this tutorial)

# Main Capacities of AEJEE

## Display GIS data

- Shapefiles plus various image formats
- Use data stored on local sources (hard drive, CD, LAN)
- Use data distributed over Internet via ArcIMS servers
- Pan and zoom
- Set a specific scale
- Set scale dependency for data
- Measure distance
- Buffer
- Change display projection of decimal degree data on the fly
- Hot Link to files of various types
- Set an overview map for context
- Print or export (.BMP, .JPG, .PNG) map or layout

## Display attributes of GIS features

- Identify individual features
- Label all features
- Display dynamic MapTips
- Display full table (including sort by alpha or numeric)

## Classify GIS feature data (points, lines, polygons)

- Single symbol
- Unique values
- Graduated
  - Quantile, equal interval, custom classes
  - Ramp or customize colors
  - Show histogram and statistics

## Select particular GIS features interactively

- Find by attribute
- Logical query using attributes, values, and math operators
- Select using buffer

## Create point shapefiles from XY tables (such as GPS coordinates)

- .TXT (tab-delimited), .CSV (comma separated), or .DBF files

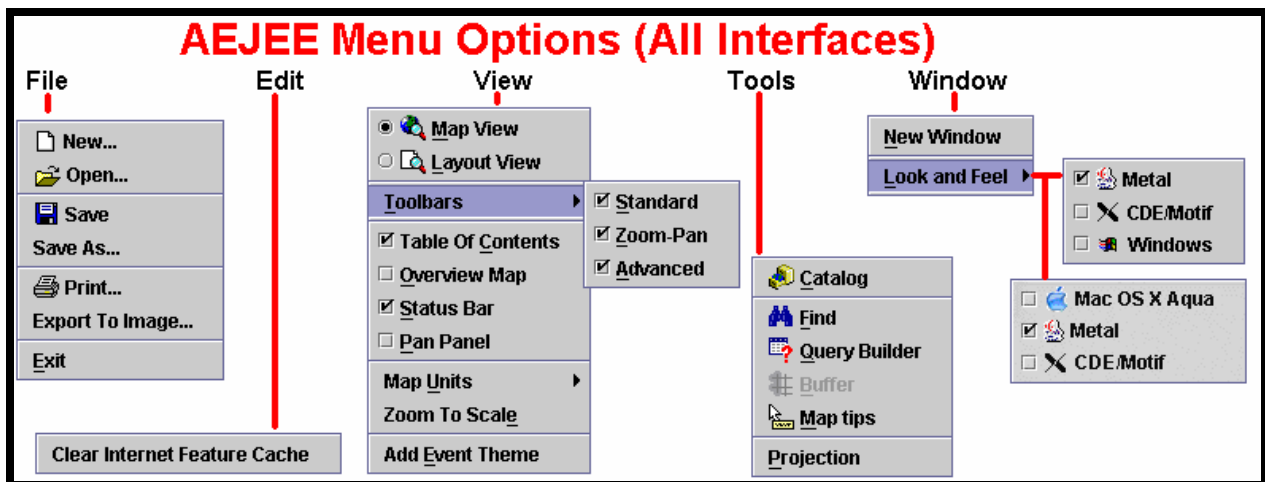
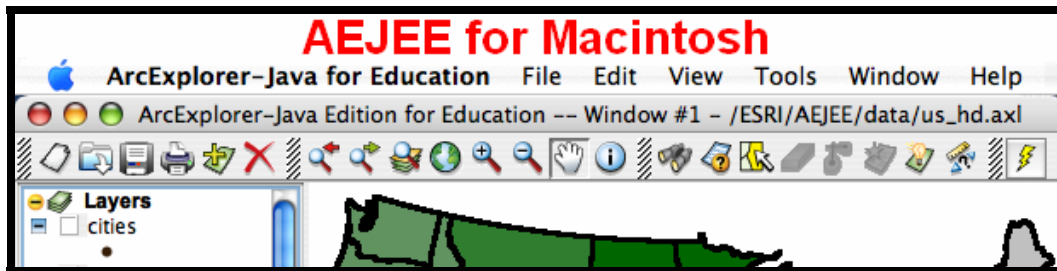
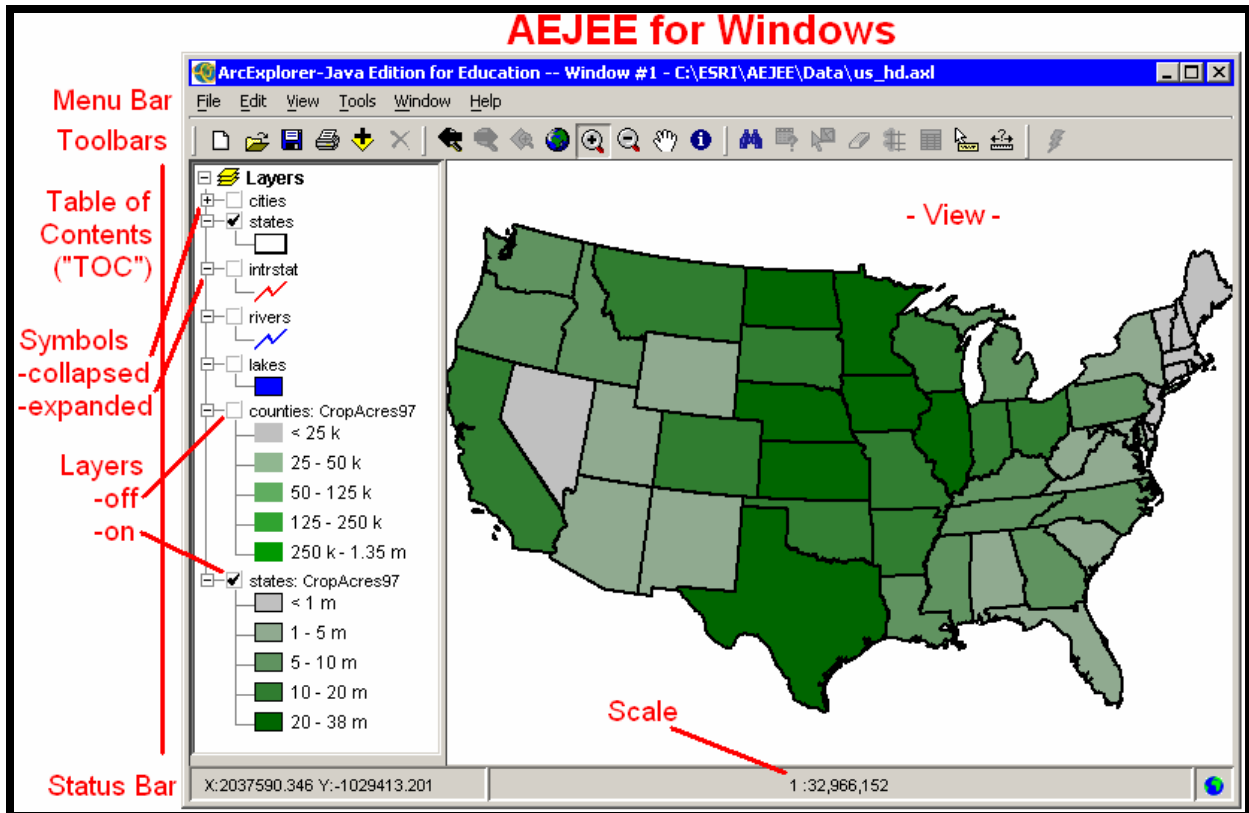
## Share projects

- Open existing projects
- Create and save new projects
- Data paths can be edited, and relative paths set, with simple text editor

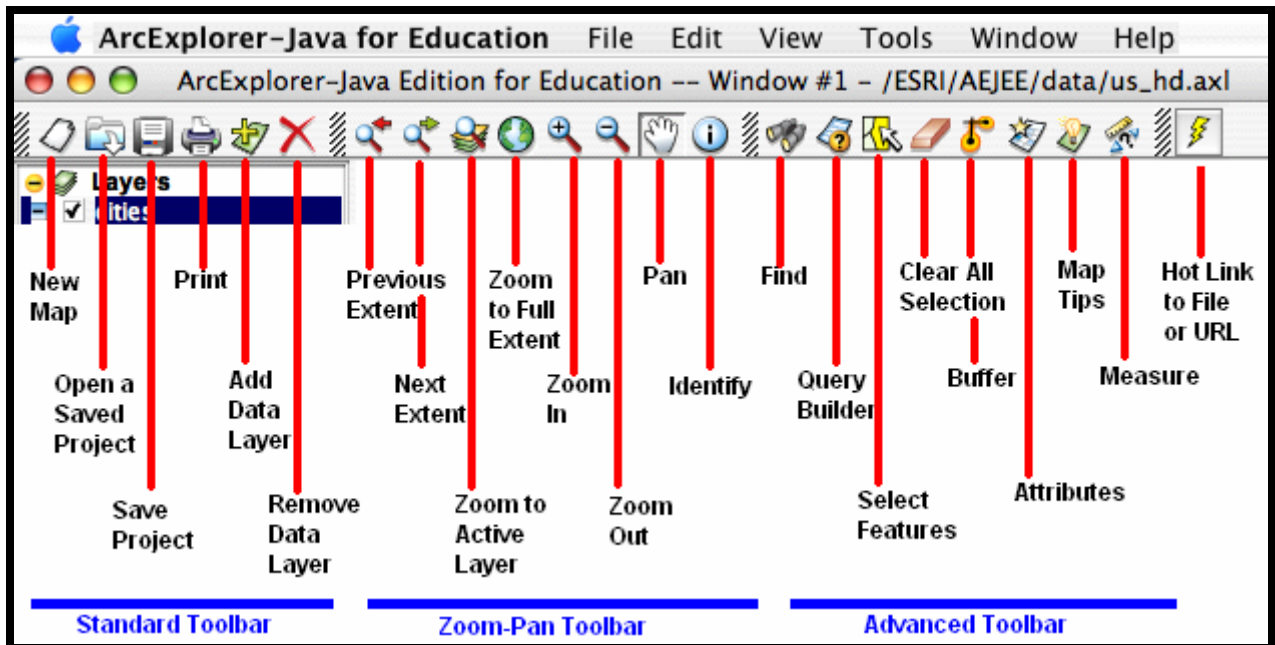
## Create custom layouts

- Maps with legend and scale bar
- Annotate with text and graphics
- Multiple data frames

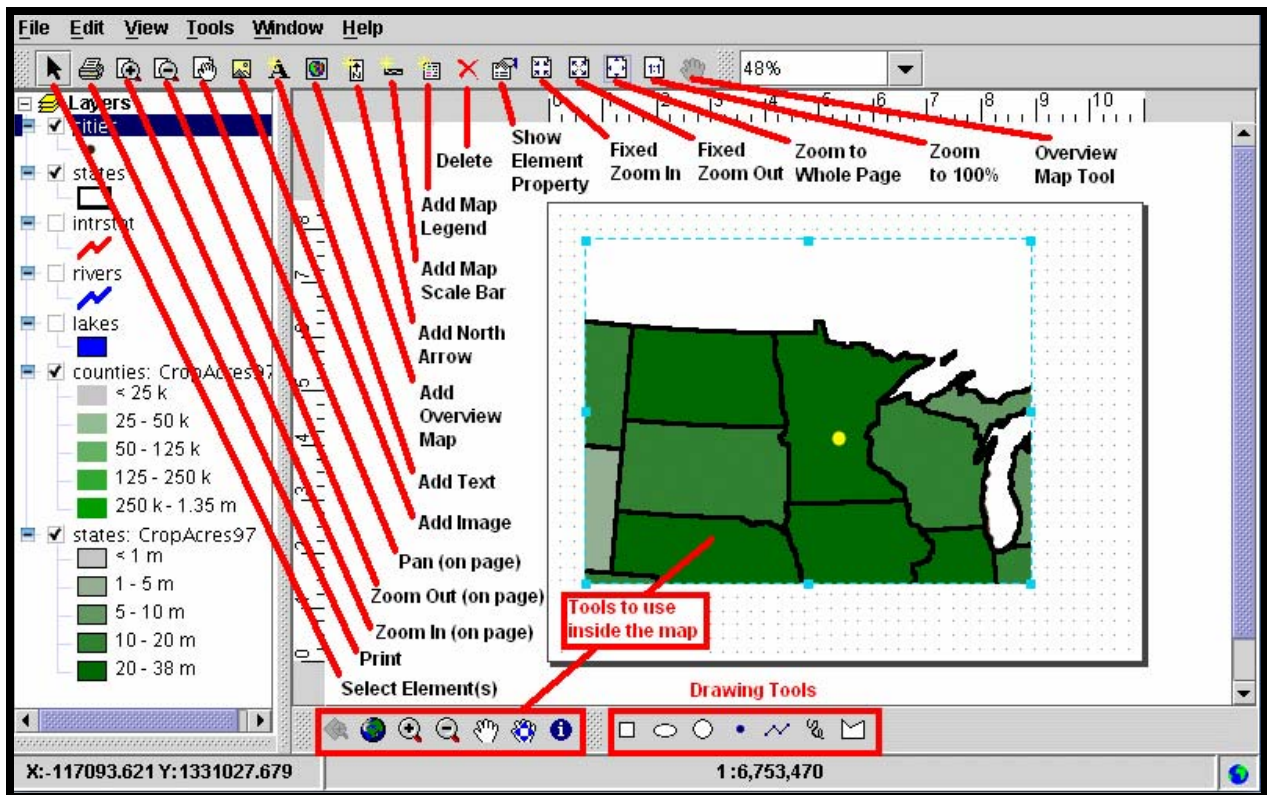
AEJEE looks and works the same across platforms.



All AEJEE interfaces in "Map" view use the same set of toolbars, with about 20 buttons.



The "Layout" view (shown here in "Metal" mode) includes special tools for customizing output.

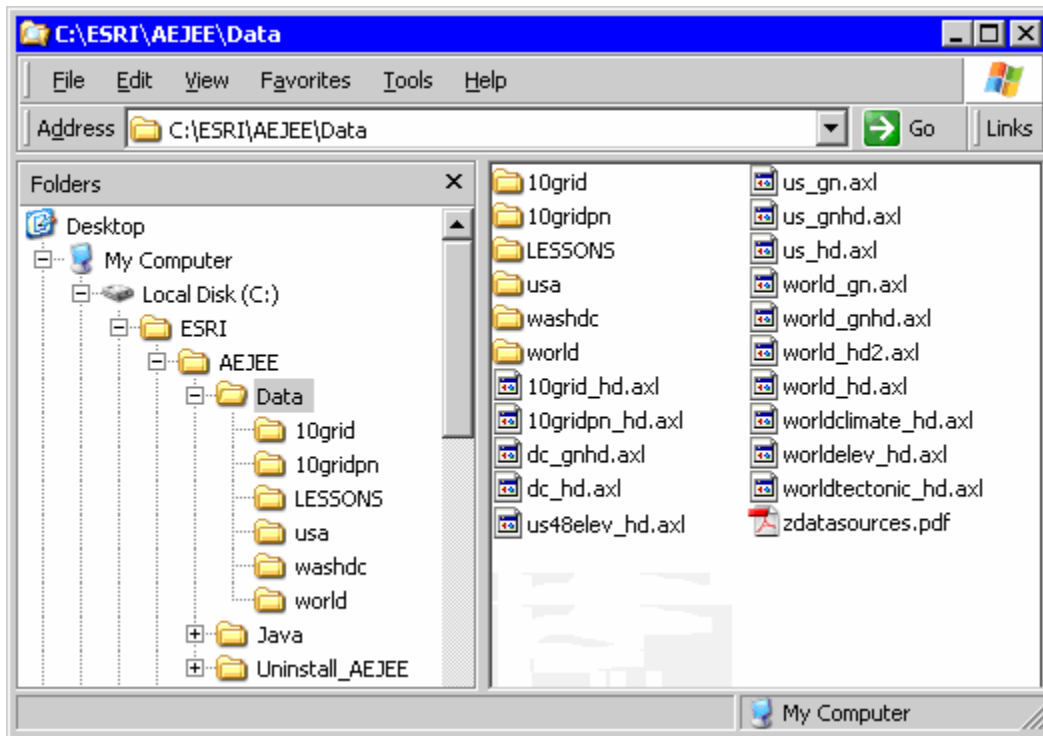


# Projects and Data for AEJEE

AEJEE is a GIS data viewer that can handle data stored on locally accessible sources (hard drive, CD, or local network) as well as data coming from the Internet, served by ArcIMS data servers. AEJEE users can save and share projects, which include pointers to the source of the data.

Projects stored with this installation of AEJEE engage data from both local and Internet sources. Projects with names including the letters "hd" use data from the hard drive. Projects with names including "gn" use data from the Internet, coming from the Geography Network. Projects with names including "gnhd" use data from both sources. **Any project engaging data from the Internet requires the computer to be connected to the Internet in order for the project to operate; if a project cannot access a listed data source, the project will not open.**

- 10grid\_hd.axl = project data from hard drive only
- world\_gn.axl = project data from Geography Network only
- us\_gnhd.axl = project data from both hard drive and Geography Network



You can use the data that comes with AEJEE to create new projects. You can share those projects with other users of AEJEE, and they will be able to see your creations because they have the same data. You can use data from the Geography Network and other ArcIMS-based servers to create new projects also. You can share those projects with other users of AEJEE, and they will be able to see your creations if they also are connected to the Internet.

## **Redistribution Rights for software, projects, maps, and data**

Issues of copyright can be challenging to understand, but here are some guidelines that should help users of AEJEE take best advantage of the redistribution rights available to you.

### **Q. 1: Can I give AEJEE to someone else?**

A. 1: Users at schools may install AEJEE on any number of computers for instructional, non-commercial use. Teachers and students may install AEJEE on home computers for school work. You may give AEJEE to someone else to install for personal, instructional, non-commercial use, as long as you provide the entire installer, including the license and documentation, and do not charge for provision of the installer. For any other uses, see [www.esri.com/aejee](http://www.esri.com/aejee) and send an email to "k12-lib@esri.com".

### **Q. 2: Can I make an AEJEE project, save it, and share that project?**

A. 2: Yes. The project file is just a "recipe" – a set of instructions for AEJEE to find data in certain places and treat it in certain ways. If you create a project, you are the owner, and may share it with others. Just remember that other AEJEE users will only be able to use the project if they have access to the same data in the same locations, either the same locations on their hard drive or out on the Internet in a place to which they have access. (See Appendix 2 about creating "transportable projects.")

### **Q. 3: Can I submit a paper or multimedia project with a map I made using AEJEE?**

A. 3: It depends. When you make a map, you are establishing the "look and feel" of the display. You are defining how things will look. If you own the data that makes up the map, or if the permissions for the data you use are such that you may create and share images, then you can create a map and include it in a paper. Sometimes, data providers are protective of their data, and you may not have the right to distribute maps that you create. Other times you can distribute maps you create, but only with permission or acknowledgement of the data provider. With AEJEE, the data included may be used in creation of maps for non-commercial educational purposes, and may be used by students and teachers in creation of maps for hardcopy or electronic representation, including but not limited to paper documents, multimedia presentations, or web sites. For data included with AEJEE, use as attribution "Data used with permission of ESRI."

### **Q. 4: Can I use the data that comes with AEJEE in another project with another tool?**

A. 4: It depends. If you are a non-commercial educational user making maps with AEJEE and with other GIS tools, and you want to use the data that comes with AEJEE to create some maps with other tools, such as for a comparative analysis of the differences between AEJEE and ArcView<sup>®</sup>, you may use the same data in other tools. But not all such external uses are permitted. The digital data included with AEJEE may not be distributed for use in other mapping, database, or alternative software packages without written authorization from ESRI. Send an email to "k12-lib@esri.com" with specific questions.